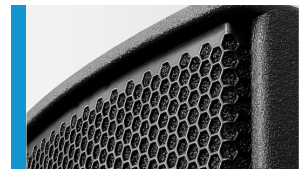




High output universal HiMid system fitted with a classic 2 x 8" Nd / 1" driver combination. Equally suited as a strong top in combination with a subwoofer or as a stand alone system for speech reproduction over short to medium distances. Four M10 mounting points, and a fifth as an optional alternative to the speaker stand socket, in combination with the comprehensive accessory range, allow simple vertical or horizontal mounting. The integrated digital amplifier technology provides 500 / 150 Watt AES and DSP control. A range of factory-configured presets and volume settings can be selected.

PRODUCT SPECIFICATIONS

Speaker Components	2 x 8" Nd / 1"
Description	HiMid Sound System
Amp Power	LF: 500 W AES / 110-230 V HF: 150 W AES / 110-230 V
Rated Current	0,6 A @ 230 V
SPL <small>Peak @ 1 m</small>	132 dB
Max. Input Signal	25 dBu
DSP	HDLM FPGA Processing 32 bit floating point
AD / DA	24 bit / 96 kHz
Latency	0,8 ms (analog in to analog out)
Usable Range	80 Hz - 20 kHz (- 6 dB)
Tuning Frequency <small>excursion minimum</small>	90 Hz
X - Overpoint <small>acoustical</small>	Depends on preset
Coverage <small>horizontal / vertical</small>	90° x 60° - rotatable
Connectors	Neutrik XLR in/out Neutrik PowerCon in/out
Handles	1 x
Rigging / Fittings	4 x M10, 2 x M6 35 mm pole mount
Weight	13,5 kg
Size <small>height x width x depth</small>	59,0 x 25,0 x 25,0 cm
Order No.	00240/ II/dp

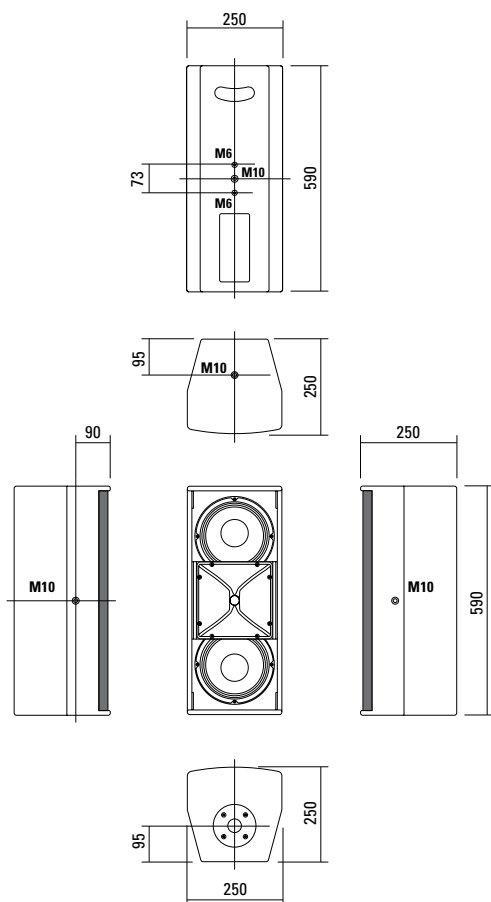


Connection Panel.

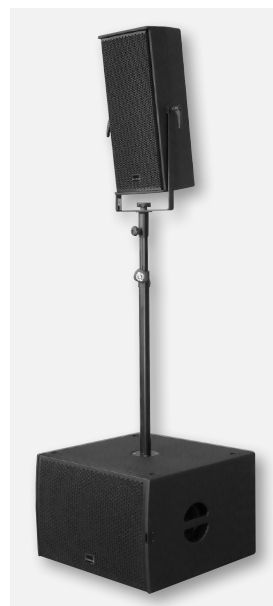


Ergonomically formed handle slot on the rear side for comfortable transport.

DIMENSIONS



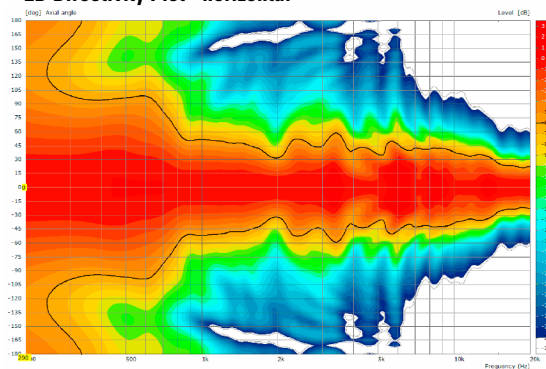
APPLICATION



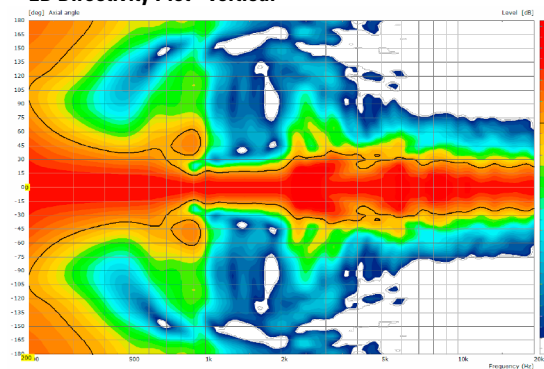
A 3 dp / G Sub 1501

COVERAGE PATTERNS

2D Directivity Plot - horizontal



2D Directivity Plot - vertical



The A 3 dp features integrated digital amplifier electronics with a DSP controller. Various factory-configured presets and volume settings can be selected.

High-grade electronic components from the industrial sector

and a first-class circuit design ensure excellent audio quality with low distortion and a minimal noise floor.

Highly efficient and "intelligent" limiter systems ensure optimum protection against overload, without restricting the possibilities offered by this high-performance sound system.

Level

Adjustment in 3 dB steps (-6 dB to +3 dB).

Status

Mute LED

Red light when the system is muted or under technically critical conditions.

Limit LED

Yellow light when the limiter is restricting the level.

Signal LED

Green light when the input signal exceeds -20 dBu

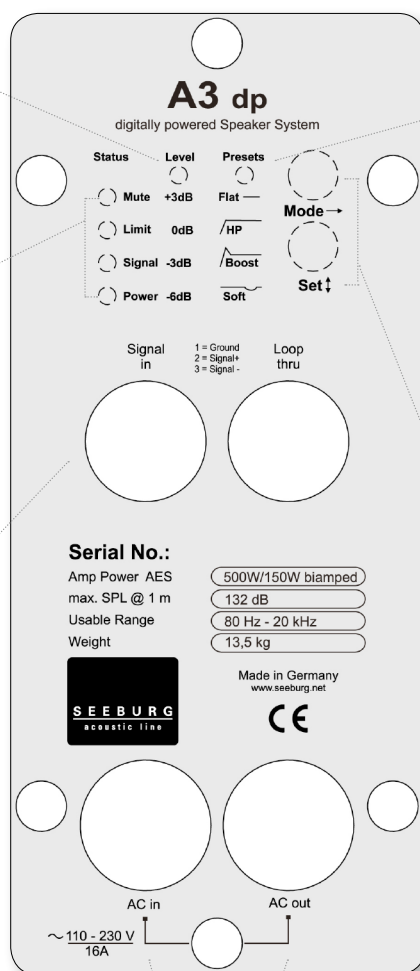
Power LED

Green light when the system is switched on.

XLR

Symmetrical analog input max. Input +25 dBu.

Effective filter protection against HF interference and DC Voltages. Electronically balanced to prevent noise.



Presets

Flat

This setting provides a linear frequency response with a neutral sound characteristics. Standard setting for many applications.

HP

Switches in a high pass filter for use in combination with a subwoofer.

Boost

The same neutral response as the „Flat“ setting, but with the addition of a bass boost.

Soft

Reduces the level in the frequency range from 2.5 - 5 kHz, to which the ear is particularly sensitive. This setting is recommended for high level reproduction of highly compressed music tracks.

Mode - key

Switches between control modes: Status, Level and Presets.

Set - key

Setting of various values and Mute on / off.

PowerCon (blue)

Power supply
~ 110-230 V / 16 A max.

PowerCon (grey)

~ 110-230 V / 16 A max.
loop through connector.

Flying Bracket



for A 3
horizontal alignment,
incl. (2 x M10 x 20 socket head
screws, 2 x rubber washers,
1 x plate)
Order No. **01215/H/set/w** (RAL 9010)
Order No. **01215/H/set**

Flying Bracket



for A 3
incl. (black version: 2 x M10 x 20
handle screws, 2 x rubber washers
white version: 2 x M10 x 20 socket
head screws, 2 x rubber washers)
Order No. **01215/set/w** (RAL 9010)
Order No. **01215/set**

Handle Screw



for flying brackets, adjustable
Order No. **08375/20** (M10 x 20)

Rubber Washer



for flying brackets,
5 mm x 40 mm Ø
Order No. **01206**

Plate



for A 2 / A 3 flying brackets,
horizontal alignment,
replacement for pole mount flange,
110 mm Ø flange with M10 nut
Order No. **08119/M10/w** (RAL 9010)
Order No. **08119/M10**

Knurled Head Nut



reduction screw for fastening
M10 Pole Mount Adapter (08126)
Order No. **73755**

Pole Mount Adapter



35 mm Ø → M10 x 16 mm,
M8 x 20 star knob screw
Order No. **08126**

Flange



with ball and socket joint,
with additional locking screw,
M10 x 15, max. load 15 kg
Order No. **08125**

Quick Trigger Clamp



max. load 100 kg
Order No. **01223/100 kg**

Quick Trigger Clamp - small



M10, max. load 20 kg
Order No. **01223/20 kg**

Truss Clamp



incl. M10 Adapter,
max. load 15 kg
Order No. **01221**

Steel Safety



6 mm x 600 mm, black,
max. load 22 kg (BGI 810-3),
quick connector undetachably
Order No. **01376/6**

Ring Screw



M10– DIN 580
Order No. **73700** (zincd)
Order No. **73700/sw** (black zincd)

TV Spigot



10 mm internal thread,
28 mm Ø
Order No. **08128**



ACCESSORIES A 3 dp

Wall Mount



ball and socket joint flange (08125)
+ 08125/plate

Order No. **08125/set**

Wall Mount



for U-brackets, max. load 40 kg,
incl. screws
(M10 x 70 mm socket head screw,
M10 hex lock nut and flat washer)

for 8"-12" speakers
Order No. **08130/F269**

Wall Mount



2 x M6 fixing holes (d=73 mm),
1 x M10 fixing hole (center),
max. load 25 kg

Order No. **03034**

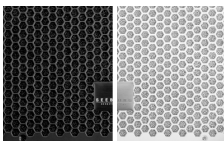
Spacer



for Wall Mount (03034),
polyurea coated

Order No. **03034/spc**

Honeycomb Grilles

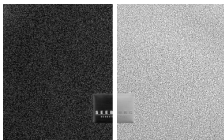


for A 3 front replacement.

Foam behind grille

Order No. **97006/hex/compl**

Order No. **97006/hex/compl/w**
(RAL 9010)



Foam in front of grille

Order No. **97006/compl.**

Order No. **97006/compl/w**
(RAL 9010)

Hybrid Cable System



PowerCon-PowerCon / XLR-XLR

2,5 m Order No. **08462**

5 m Order No. **08464**

10 m Order No. **08466**

15 m Order No. **08468**

Speaker Stand



K&M, incl. wind up,
height 138,5 to 218 cm,
max. load 50 kg,

Order No. **03011**

K&M, height 137,5 to 218,5 cm,
max. load 50 kg,

Order No. **03010**

Cover



for A 3, padded

Order No. **01258**

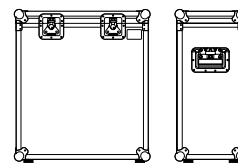
Rain Cover



for A 3

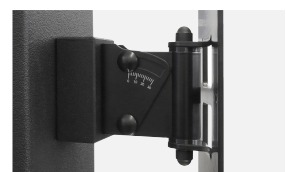
Order No. **01258/outdoor**

Flight Case Trunk



for 2 pcs. A 3 and accessories,
standard, 7 mm birch multiplex,
PVC coated, hinged lid, 2 x recessed
sprung handles, 2 x butterfly catches,
4 x 100 mm blue wheels, 2 pcs. with
brake, rubber feet, partition walls,
interior lined with felt.

Order No. **16066**



Spacer -> Wall Mount